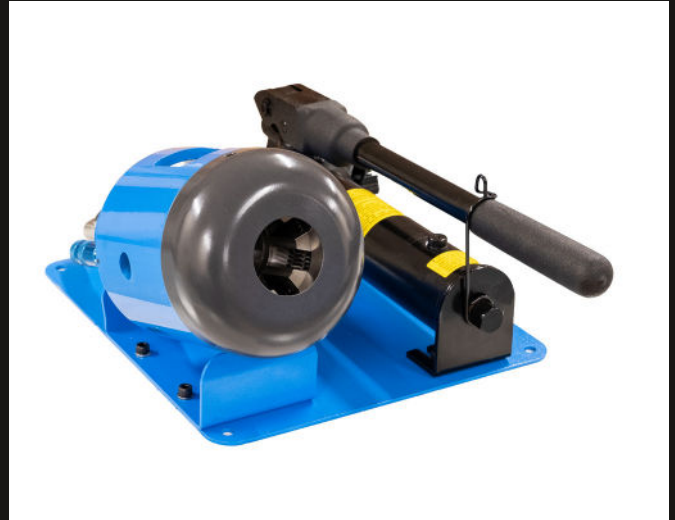


# OM-08

The OM-08 is a compact, lightweight crimping machine with twin speed hand pump. Ideal for hose assemblies, brake lines and other small applications. Light enough to be carried on site or used in mobile environments. Fitted with single swage collet with 10mm range (17-27 as standard.)



- **Hose capacity 1/4" to 1/2" (2 wire)**
- **Twin speed manual hand pump**
- **Easy to use dial adjusted calibrator.**
- **Lightweight and portable**
- **See data sheet for available swage collet sizes or contact us for custom die design.**

## TECHNICAL DATA

<b>Hose capacity:</b>	¼" - ½" 2 wire
<b>Swaging ranges:</b>	Any 10mm range between 5-35mm (17-27mm standard die set)
<b>Radial swaging force:</b>	622kN
<b>Pump:</b>	Twin speed 10,000 psi (690 bar)
<b>Weight:</b>	28kg